

Automated Immunoassay System HISCL

# Early detection of Alzheimer's disease with a simple blood test



# First CE-marked immunoassay for pre-screening with blood samples

For a long time, reliable detection of  $\beta$ -amyloid was only possible from CSF or using imaging techniques (e.g., amyloid PET). Even in cases where these procedures are medically necessary, they are often invasive or expensive. With the help of highly sensitive procedures such as the Sysmex Automated Immunoassay System HISCL, biomarkers for early detection of Alzheimer's disease – such as the  $\beta$ -Amyloid 1-42/1-40 ratio – can now be measured from blood samples. This makes diagnostics less risky, less complex, and significantly more economical.

## Key facts

- Alzheimer's pre-screening in routine testing
- Non-invasive blood sampling
- CE-IVD certification

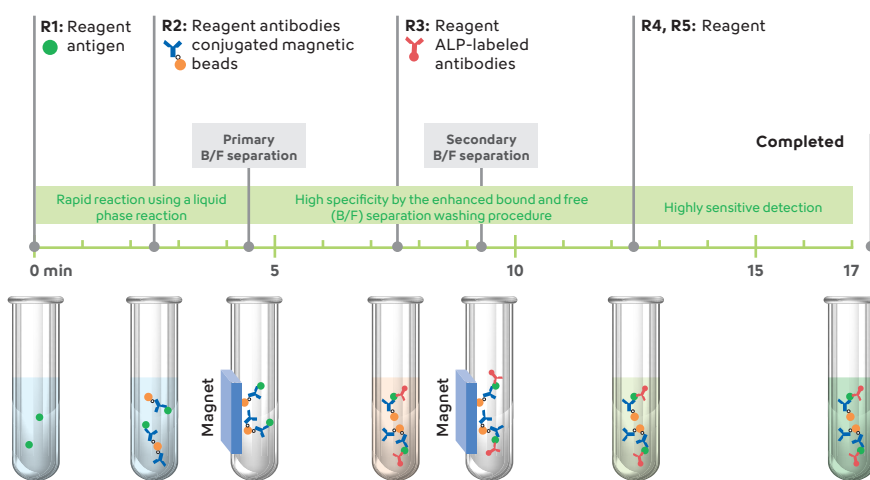
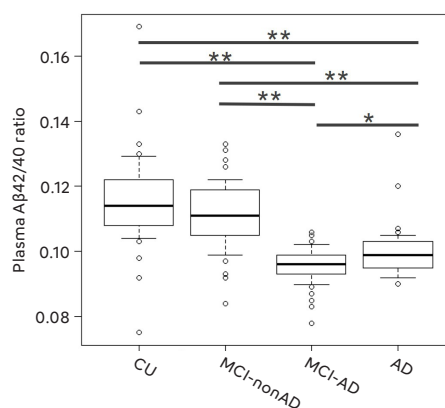
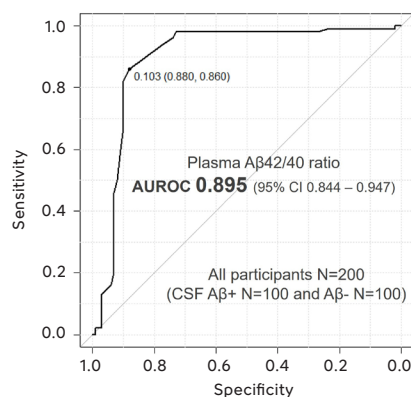


Fig. 1 Principle of HISCL platform

## High predictive accuracy for amyloid pathology



The  $\beta$ -Amyloid 42/40 ratio measured from plasma samples using the Automated Immunoassay System HISCL shows an impressive accuracy (AUC 0.895) for predicting  $A\beta$  pathology.

Reference: Y Sasaki et al. [HJ51] (2024): Performance of plasma  $A\beta_{42}/40$  ratio to predict  $A\beta$  pathology status defined by CSF testing in SPIN cohort, Poster ADPD.



Discover more on our website  
[www.sysmex-europe.com/hiscl](http://www.sysmex-europe.com/hiscl)